



2 0 2 4

Autumn & winter

N E W +

A R R -

I V A L S



ABOUT US

Dioz Group is a global leader in private label manufacturing of all kinds of Custom Apparel and Accessories. We are known for our commitment towards innovation, sustainability and maintaining high-quality in all aspects of our work. Dioz has a strict code of conduct and we only work with factories and supply chain partners who ensure that the work ethics, safety, fair labour practices, and environmental consideration are at the core of their organizations.

Our constant focus on research and development keeps us at the top of global trends, latest manufacturing techniques, innovative sustainable practices and most importantly - customer satisfaction. Our clients range from large multinational corporations to small start-ups, and benefit from our 17+ years of experience in research and building resources.





Daily Backpack

Individual laptop compartment, can fit 15.6" laptop, mouse, charger and other digital accessories.
External USB port on the side in order to charge your phone.
Trolley sleeve at the back, easy to carry.

K9945W



Water Proof



Travel Strap



Charging



Hidden Pocket

Dimensions

Materials

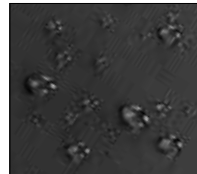
Weight

Volume

Color



Detail

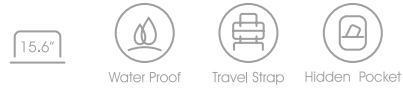




Daily Backpack

- Simple design, suitable for business commuting.
- Padded laptop sleeves- fits laptops up to 15.6".
- Clamshell opening - full opening for easy loading and good overview.
- Trolley sleeve at the back, easy to carry.

K10020W



Dimensions

H:47cm (18.5in)
L: 27.5cm (10.8in)
W: 16cm (6.3in)

Materials

Polyester + leather

Weight

1kg

Volume

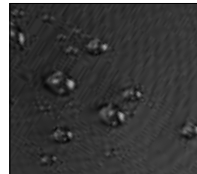
20L

Color

Black ●



Detail



Daily Backpack



- Made from water-resistant and wear-resistant polyester fabric.
- Padded laptop sleeves- fits laptops up to 15.6 "
- Clamshell opening - full opening for easy loading and good overview.
- External USB port on the side in order to charge your phone.
- Trolley sleeve at the back, easy to carry.

K9993W

				
15.6"	Water Proof	Quick Access	Charging	Travel Strap

Dimensions	Materials	Weight	Volume	Color
H: 41cm (16.1 in) L: 28.5 cm (11.2 in) W: 19cm (7.48in)	Polyester + leather	0.93kg	20L	Black ●

Detail



Daily Backpack



- Simple design, suitable for business commuting.
- Trolley sleeve at the back, easy to carry.
- Made from water-resistant and wear-resistant polyester fabric.
- Padded laptop sleeves- fits laptops up to 15.6".
- Front zipper pocket for quick access smalls.

K9978W



Dimensions	Materials	Weight	Volume	Color
H: 47cm (18.5 in) L: 31cm (12.2 in) W: 20 cm (7.8 in)	Polyester + leather	1.1kg	28 L	Black ●

Detail



Daily Backpack



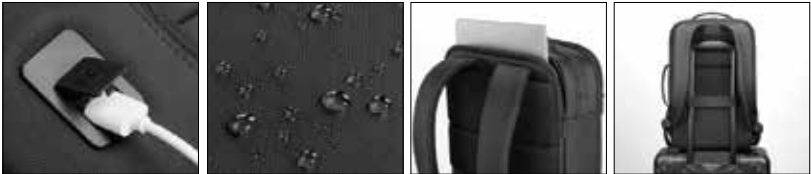
- Made from water-resistant and wear-resistant polyester fabric.
- Padded laptop sleeves- fits laptops up to 15.6".
- Ergonomic design, Convenient & Adjustable Shoulder Strap.
- Trolley sleeve at the back, easy to carry.
- Front zipper pocket for quick access smalls.

K10001W



Dimensions	Materials	Weight	Volume	Color
H: 45 cm (17.7 in) L: 29 cm (11.4 in) W: 17 cm (6.7 in)	Polyester + leather	1.05kg	20L	Black ●

Detail





Daily Backpack

- Simple design, suitable for business commuting.
- Made from water-resistant and wear-resistant polyester fabric.
- Padded laptop sleeves- fits laptops up to 15.6".
- Trolley sleeve at the back, easy to carry.
- Quick pockets at the left and right design can fit for water bottles.

K10009W



Dimensions	Materials	Weight	Volume	Color
H: 45cm (17.7in) L: 30cm (11.8in) W:15cm (5.9in)	Polyester + leather	0.82kg	16.5L	Black ●



Detail





Daily Backpack

- Simple design, suitable for business commuting.
- Made from water-resistant and wear-resistant polyester fabric.
- External USB port on the side in order to charge your phone.
- Trolley sleeve at the back, easy to carry.
- Padded laptop sleeves- fits laptops up to 15.6".

K10000W



Dimensions

H: 50cm (19.7in)
L: 31 cm (12.2in)
W: 17cm (6.7in)

Materials

Polyester + leather

Weight

1.05kg

Volume

23L

Color

Black ●



Detail





Daily Backpack

- Simple design, suitable for business commuting.
- Made from water-resistant and wear-resistant polyester fabric.
- External USB port on the side in order to charge your phone.
- Trolley sleeve at the back, easy to carry.
- Padded laptop sleeves- fits laptops up to 15.6".

K10015W



Water Proof



Hidden Pocket



Quick Access



Travel Strap

Dimensions

H: 45cm (17.7in)
L: 30cm (11.8in)
W: 13cm (5.1in)

Materials

Polyester + leather

Weight

0.77kg

Volume

16L

Color

Black ●



Detail



Daily Backpack



- Minimalist look with a smooth, minimal panel design.
- Clamshell opening - full opening for easy loading and good overview.
- Quick pockets at the left and right design can fit for water bottles.
- Chest strap for extra comfort with heavy loads.
- Padded compartment fits most 15" laptops.

K9991W



Dimensions	Materials	Weight	Volume	Color
H: 49cm (19.3in) L: 30.5cm (12in) W: 21cm (8.2in)	Polyester + leather	1.32kg	25.5L	Black ●



Detail





Daily Backpack

- Simple design, suitable for business commuting.
- Made from water-resistant and wear-resistant polyester fabric.
- The hidden zipper pockets on the back can store valuables such as wallets, certificates, etc.
- External USB port on the side in order to charge your phone.
- Padded laptop sleeves- fits laptops up to 15.6".

K10006W



Dimensions

H: 45 cm (17.7 in)
L: 29 cm (11.4 in)
W: 16 cm (6.2 in)

Materials

Polyester

Weight

0.9kg

Volume

20 L

Color

Black ●

Detail





Daily Backpack

- Simple design, suitable for business commuting.
- Made from water-resistant and wear-resistant polyester fabric.
- The main compartment can store 15.6-inch laptop and 11-inch tablet.
- External USB port on the side in order to charge your phone.
- Trolley sleeve at the back, easy to carry.

K10007W



Water Proof



Hidden Pocket



Quick Access



Trolley Strap

Dimensions

H: 49cm (19.3 in)
L: 31cm (12.2 in)
W: 16cm (6.3 in)

Materials

Polyester + leather

Weight

0.96kg

Volume

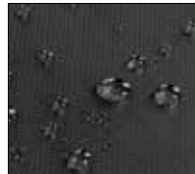
22L

Color

Black ●



Detail





Daily Backpack

- Simple design, suitable for business commuting.
- The main compartment can store 15.6-inch laptop and 11-inch tablet.
- Trolley sleeve at the back, easy to carry.
- Front zipper pocket for quick access smalls.

K9943W



Dimensions	Materials	Weight	Volume	Color
H: 44 cm (17.5 in) L: 30 cm (11.8 in) W: 13 cm (5in)	Polyester + leather	0.85kg	17 L	Black ●



Detail



Daily Backpack



- Made from water-resistant and wear-resistant polyester fabric.
- The main compartment can store 15.6-inch laptop and 11-inch tablet.
- External USB port on the side in order to charge your phone.
- Trolley sleeve at the back, easy to carry.
- Quick pockets at the left and right design can fit for water bottles.

K9956W



Dimensions	Materials	Weight	Volume	Color
H: 43.5cm (17in) L: 30 cm (11.75 in) W: 15cm (6in)	Polyester	0.85kg	18.5L	Black ●



Detail

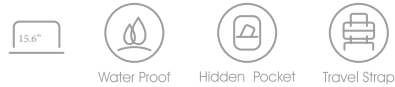


Laptop Bag



- Made from water-resistant and wear-resistant polyester fabric.
- The main compartment can store 15.6-inch laptop and 11-inch tablet.
- Trolley sleeve at the back, easy to carry.
- Front zipper pocket for quick access smalls.

K9944W



Dimensions

H: 28.5cm (11.25 in)
L: 42cm (16.5in)
W: 14cm (5.5in)

Materials

Polyester

Weight

0.72kg

Volume

11L

Color

Black ●

Detail



Daily Backpack



- Simple design, suitable for business commuting.
- Made from water-resistant and wear-resistant polyester fabric.
- Padded laptop sleeves- fits laptops up to 15.6".
- External USB port on the side in order to charge your phone.
- Trolley sleeve at the back, easy to carry.

K10010W

15.6"	Water Proof	Hidden Pocket	Quick Access	Travel Strap

Dimensions	Materials	Weight	Volume	Color
H: 46cm (18.1in) L: 30cm (11.8in) W: 15cm (5.9in)	Polyester + leather	0.83kg	16.5L	Black ●



Detail





Daily Backpack

- Simple design, suitable for business commuting.
- Premium lightweight & waterproof fabric & leather handles.
- Padded laptop sleeves- fits laptops up to 15.6".
- External USB port on the side in order to charge your phone.
- Trolley sleeve at the back, easy to carry.
- Hidden back pocket for your passport or wallet.

K10022W



Dimensions

H: 42cm (16.5in)
L: 29cm (11.4in)
W: 12cm (4.7in)

Materials

Polyester + leather

Weight

0.81kg

Volume

13L

Color

Black ●

Detail



Daily Backpack



- Simple design, suitable for business commuting.
- Premium lightweight & waterproof fabric & leather handles.
- Padded laptop sleeves- fits laptops up to 15.6".
- Trolley sleeve at the back, easy to carry.
- Hidden back pocket keeps your passport or wallet safe and secure.

K9879W



Dimensions	Materials	Weight	Volume	Color
H: 46cm (18.1in) L: 30cm (11.8in) W: 18cm (7in)	Polyester + leather	0.95kg	23.5L	Black ●



Detail





Daily Backpack

- Simple design, suitable for business commuting.
- Premium lightweight & waterproof fabric & leather handles.
- Padded laptop sleeves- fits laptops up to 15.6" .
- Trolley sleeve at the back, easy to carry.
- The hidden zipper pockets on the back can store valuables such as wallets, certificates, etc.
- Easy Charging 3.0 System.

K9987W



Dimensions	Materials	Weight	Volume	Color
H: 45.5cm (17.9in) L: 31cm (12.2in) W: 18cm (7in)	Polyester + leather	1.1kg	22L	Black ●



Detail





Daily Backpack

- Simple design, suitable for business commuting.
- Premium lightweight & waterproof fabric & leather handles.
- Padded laptop sleeves- fits laptops up to 15.6" .
- Trolley sleeve at the back, easy to carry.
- The hidden zipper pockets on the back can store valuables such as wallets, certificates, etc.

K9886W

				
15.6"	Water Proof	Hidden Pocket	Quick Access	Travel Strap

Dimensions	Materials	Weight	Volume	Color
H: 43cm (16.9in) L: 32cm (12.6in) W: 15cm (5.9in)	Polyester + leather	0.83kg	17.5L	Black ●



Detail





Daily Backpack

- Simple design, suitable for business commuting.
- Made from water-resistant and wear-resistant polyester fabric.
- Padded laptop sleeves- fits laptops up to 15.6".
- Trolley sleeve at the back, easy to carry.

K10018W



Water Proof



Quick Access



Travel Strap

Dimensions

H:45cm (17.7in)
L: 29cm (11.4in)
W: 18cm (7in)

Materials

Polyester + leather

Weight

0.79kg

Volume

19.5L

Color

Black ●



Detail

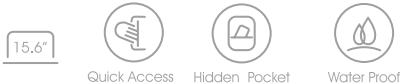


Daily Backpack



- Minimalist look with a smooth, minimal panel design.
- Tenacious 900D Polyester body fabric.
- The main compartment can store 15.6-inch laptop and 11-inch tablet.
- Front zipper pocket for quick access smalls.

K9984W



Dimensions	Materials	Weight	Volume	Color
H: 42cm (16.5 in) L: 28cm (11 in) W: 11.5cm (4.5in)	Polyester + leather	0.61kg	11.5L	Blue Grey ●

Detail



Laptop Bag

- Individual laptop compartment, can fit 15.6" laptop, mouse, charger and other digital accessories.
- Hidden front zipper pocket for quick access smalls.
- Premium lightweight fabric & leather handles.



K9964W



Dimensions	Materials	Weight	Volume	Color
H: 28cm (11in) L: 42 cm (16.5 in) W: 9cm (3.5in)	Polyester + leather	0.5kg	11.5L	Blue Grey ●

Detail

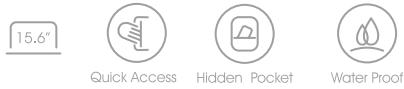


Duffle

- Adjustable and detachable shoulder strap (with padded mesh shoulder support)
- Roomy main compartment tote to be easily packed and organized.
- Padded laptop sleeves- fits laptops up to 15.6".



K9983W



Dimensions

H: 29cm (11.4in)
L: 53cm (20.8in)
W: 26.5cm (10.4in)

Materials

Polyester + leather

Weight

1.05kg

Volume

35L

Color

Blue Grey ●

Detail





Laptop Bag



- Simple design briefcase, premium wear resistant 1800D eco-friendly material with leather match classy hot silver embossed.
- The main compartment can fit 15.6 inch Apple laptop, mouse, power supply, files, etc.
- The back insert lever with a hidden zipper pocket can store valuables.

KS3257W



Dimensions	Materials	Weight	Volume	Color
H:30cm (11.8in) L: 39 cm (15.5 in) W: 6.5cm (2.5in)	Polyester	0.6kg	7.5L	Black ●

Detail



Laptop Bag



- Made from regenerated Poly.
- The main compartment can store 15.6-inch laptop and 11-inch tablet.
- Front zipper bag can store earphones, charging treasure, data cable and other items
- Back zipper bag can hold magazines, contract documents and other articles

K9951W



Water Proof Hidden Pocket

Dimensions

H: 29cm (11.5in)
L: 41.5 cm (16.5 in)
W: 11cm (4.25in)

Materials

Polyester

Weight

0.86kg

Volume

11L

Color

Black ●

Detail



Laptop Bag

- Made from water-resistant and wear-resistant polyester fabric.
- The main compartment can store 15.6-inch laptop and 11-inch tablet.
- Trolley sleeve at the back, easy to carry.
- Front zipper pocket for quick access smalls.



K9941W



Dimensions	Materials	Weight	Volume	Color
H:28cm (11 in) L: 42 cm (16.5 in) W: 11.5cm (4.5in)	Polyester + leather	0.52kg	10.5L	Black ●

Detail



Laptop Bag

- Made from water-resistant and wear-resistant polyester fabric.
- The main compartment can store 15.6-inch laptop and 11-inch tablet.
- Trolley sleeve at the back, easy to carry.
- Front zipper pocket for quick access smalls.



K9940W



Dimensions	Materials	Weight	Volume	Color
H: 28cm (11in) L: 42 cm (16.5 in) W: 11.5cm (4.5in)	Polyester	0.68kg	10.5L	Black ●

Detail



Laptop Bag

- Made from water-resistant and wear-resistant polyester fabric.
- Padded laptop sleeves- fits laptops up to 13.3” .
- Hidden front zipper pocket for quick access smalls.



K10027W



Dimensions	Materials	Weight	Volume	Color
H:25cm (10 in) L:37 cm (14.5 in) W: 9cm (3.5in)	Polyester + leather	0.56kg	5.5L	Black ●

Detail





Sling Bag

- Interior pocket to store your essentials.
- Made from water-resistant and wear-resistant polyester fabric.
- Left shoulder/ right shoulder reversible.

K10028W



Water Proof



Quick Access

Dimensions

H: 31cm (12.2 in)
L: 21 cm (8.25 in)
W: 10cm (4in)

Materials

Polyester + leather

Weight

0.4kg

Volume

4.5L

Color

Black ●



Detail



Sling bag



- Made from water-resistant and wear-resistant polyester fabric.
- Left shoulder/ right shoulder reversible.
- Interior pocket to store your essentials.

K10023W



Water Proof



Hidden Pocket



Quick Access

Dimensions

H: 31cm (12.2in)
L: 21cm (8.3in)
W: 9cm (3.5in)

Materials

Polyester + leather

Weight

0.44kg

Volume

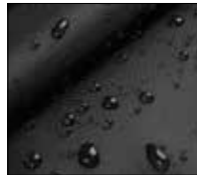
4.5L

Color

Black ●



Detail







Travel Backpack

- Carry-on-compatible 35L capacity.
- Carry the Backpack any which way—its contoured shoulder straps and sturdy side handle let you mix things up.
- Premium lightweight & waterproof fabric & leather handles.
- Trolley sleeve for easy portability when traveling.
- Chest strap for extra comfort with heavy loads.
- Holds laptops up to 17".

KS3264W



Water Proof



Hidden Pocket



Quick Access



Travel Strap

Dimensions

H: 52cm (20.5in)
L: 33 cm (13in)
W: 24cm (9.4in)

Materials

Polyester+ leather

Weight

1.54kg

Volume

35L

Color

Black ●

Blue Grey ●



Detail







Daily Backpack

- Made from water-resistant and wear-resistant polyester fabric.
- Trolley sleeve at the back, easy to carry.
- Quick access front pocket.
- The main compartment can store 15.6-inch laptop and 11-inch tablet.

K9909W

15.6"



Hidden Pocket



Travel Strap

Dimensions

H: 29cm (11.4 in)
L: 42.5cm (16.7 in)
W: 15.5cm (6.1in)

Materials

Polyester

Weight

0.5kg

Volume

17.5L

Color

Blue ●

Pink ●

Detail





Recycled Materials

Made from recycled and repurposed plastic bottles.



How Ethical Is It Versus Virgin Polyester?

This process of converting PET into recycled polyester requires much less energy than in the case of normal polyester, it takes 33-53% less energy. There are two main advantages to this process:

1. Using more recycled polyester reduces our dependence on petroleum as the raw material for our fabric needs.
2. Diverting PET bottles for this process reduces landfill, and thus less soil contamination, air, and water pollution.

Another benefit is that the bags created from recycled polyester can be recycled again and again with no degradation of quality, allowing us to minimize wastage.

This means bags manufacture could potentially become a closed loop system, polyester could forever be reused and recycled.

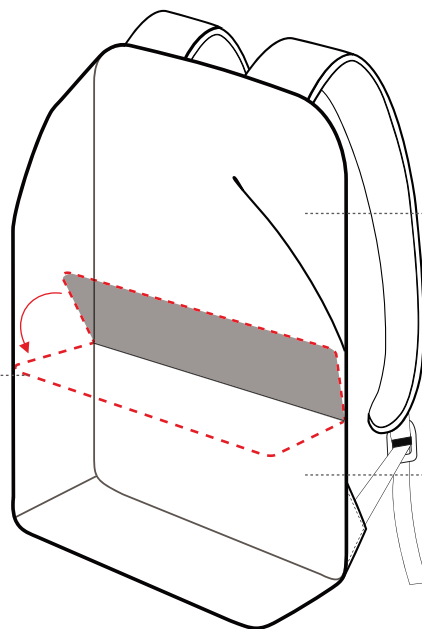


Recycled

**Bottles are better
in bag form**



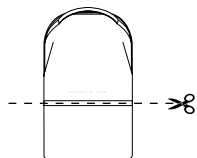
Separator can be apart to get more storage space



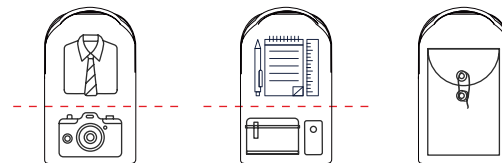
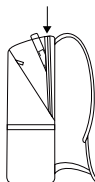
The main cabin

Camera Section

Removable Separator



Laptop Section





Recycled



Daily Backpack

- Water-resistant woven fabric, made from recycled Poly.
- Padded laptop sleeves- fits laptops up to 15.6".
- The front zipped lower compartment perfectly fits our Small Camera Insert – transforming your everyday backpack into a camera bag. You can also zip open the compartment divider for one larger storage area.

K9965W



Water Proof



Quick Access



Hidden Pocket

Dimensions

H: 45.5 cm (18 in)
L:30 cm (11.75in)
W: 15 cm (6 in)

Materials

Polyester fiber

Weight

0.72kg

Volume

16.5L

Color

Black ● Grey ●
Blue ● Khaki ●



Detail





Recycled



Daily Backpack

- Made from regenerated Poly.
- Padded laptop sleeves- fits laptops up to 15.6".
- Quick pockets at the left and right design can fit for water bottles.

K10041W



15.6"



Hidden Pocket



Quick Access

Dimensions

H:50cm (19.75in)
L: 30cm (11.8in)
W: 15cm (6in)

Materials

Polyester fiber

Weight

0.55kg

Volume

21L

Color

Black ● Gray ●



Detail





Recycled



Daily Backpack

- Trolley sleeve at the back, easy to carry.
- Front zipper pocket for quick access smalls.
- Multiple internal pockets for small accessories.
- External USB port on the side in order to charge your phone.
- Padded laptop sleeves- fits laptops up to 15.6".

K9986W



Hidden Pocket



Quick Access



Travel Strap

Dimensions

H: 47cm (18.5in)
L: 30cm (11.8in)
W: 17cm (6.7in)

Materials

Recycled Poly

Weight

0.74kg

Volume

20L

Color

Black ● Grey ●



Detail





Recycled



Daily Backpack

- TWater-resistant woven fabric, made from recycled Poly.
- Padded laptop sleeves- fits laptops up to 15.6".
- Front zipper pocket for quick access smalls.
- Quick pockets at the left and right design can fit for water bottles.

K10011W



Hidden Pocket



Quick Access

Dimensions

H: 43cm (17in)
L: 30cm (11.8in)
W: 16cm (6.3in)

Materials

600D Recycled Poly + leather

Weight

0.58kg

Volume

18L

Color

Black ●
Grey ●



Detail





Recycled



Daily Backpack

- Water-resistant woven fabric, made from recycled Poly.
- Padded laptop sleeves- fits laptops up to 15.6".
- Trolley sleeve at the back, easy to carry.
- Front zipper pocket for quick access smalls.

K10033W



Hidden Pocket



Quick Access



Travel Strap

Dimensions

H:42cm (16.5in)
L: 28cm (11 in)
W: 14cm (5.5in)

Materials

Recycled Poly

Weight

0.48kg

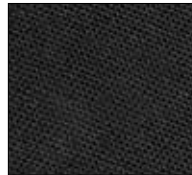
Volume

16.5L

Color

Dark blue ● Black ●
Dark green ●

Detail





Daily Backpack

- Made from water-resistant and wear-resistant polyester fabric.
- Padded laptop sleeves- fits laptops up to 15.6".
- Trolley sleeve for easy portability when traveling.
- Quick pockets at the left and right design can fit for water bottles.

K9942W



Water Proof



Travel Strap



Charging



Hidden Pocket

Dimensions

H: 45.5 cm (18 in)
L: 30 cm (11.8 in)
W: 15.5cm (6.1 in)

Materials

Recycled Poly + leather

Weight

0.73kg

Volume

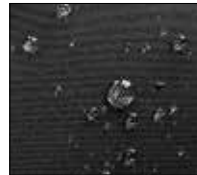
19 L

Color

Black ●



Detail





Recycled



Sling Bag

- Ergonomic design, Convenient & Adjustable Shoulder Strap.
- Made from water-resistant and wear-resistant polyester fabric.
- The main compartment can store wallet, mobile, power bank and other items.

K9971W



Water Proof



Quick Access

Dimensions

H: 30 cm (11.8 in)
L: 20 cm (7.8 in)
W: 10 cm (4in)

Materials

Recycled Poly + leather

Weight

0.30kg

Volume

4L

Color

Black ●

Detail





Sling Bag

- Ergonomic design, Convenient & Adjustable Shoulder Strap.
- Made from water-resistant and wear-resistant polyester fabric.
- The main compartment can store wallet, mobile, power bank and other items.



K9970W



Water Proof



Hidden Pocket

Dimensions

H: 20.5cm (8 in)
L: 29cm 11.4in
W: 11.5cm (4.5in)

Materials

Recycled Poly + leather

Weight

0.37kg

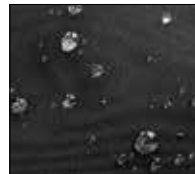
Volume

6 L

Color

Black ●

Detail





Sling Bag

- Water-resistant woven fabric, made from recycled Poly.
- Interior pocket to store your essentials.
- The selfie stick can be carried on the bottom.



K10008W



Water Proof



Hidden Pocket



Quick Access

Dimensions

H: 20cm (7.8in)
L: 36 cm (14.1in)
W: 10cm (4in)

Materials

Recycled Poly + leather

Weight

0.38kg

Volume

4L

Color

Green ●

Detail





Recycled



Sling Bag

- Water-resistant woven fabric, made from recycled Poly.
- Interior pocket to store your essentials.
- The selfie stick can be carried on the bottom.

K10013W



Water Proof



Hidden Pocket



Quick Access

Dimensions

H: 20cm (7.8 in)
L: 36cm (14.1in)
W: 10cm (4in)

Materials

Recycled Poly + leather

Weight

0.38kg

Volume

4L

Color

Black ●

Detail



